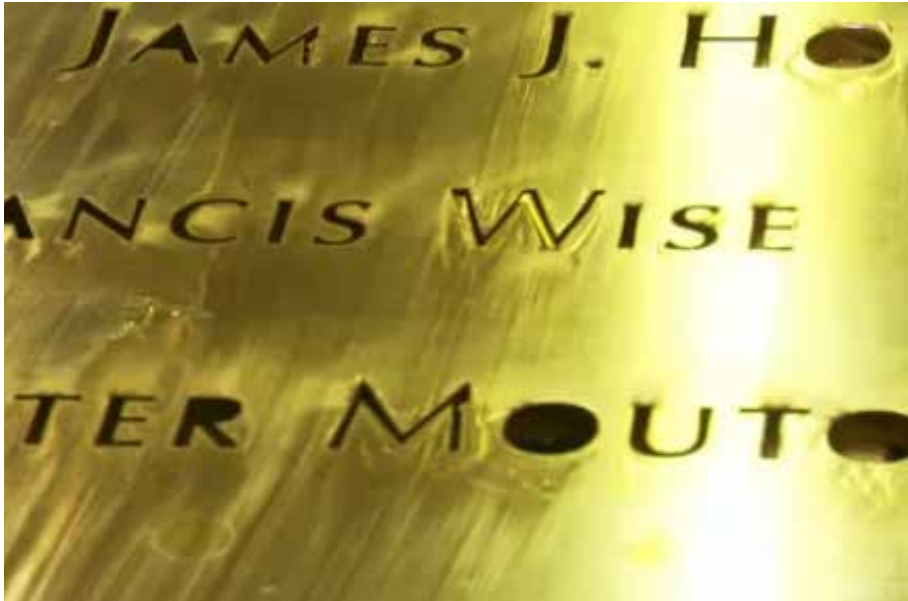


# Project Profile

## 9/11 Memorial



## About This Project

Service Metals Fabrication utilized custom leaded Muntz extrusions from Mac Metals to replace the voids created in each letter that was water-jet cut into the 1" thick bronze plates that surround the reflecting pools. The extrusions were cut into wafers and attached to the back side of the bronze plates to fill in the letters.

## Details

### Project:

Bronze Parapets with Nameplate Lettering

### Architects:

Michael Arad AIA, LEED AP, Partner, Handel Architects LLP. New York.

Peter Walker, FASLA, Partner, PWP Landscape Architecture. Berkeley, CA

### General Contractor:

NYNJ Port Authority/Memorial Foundation, New York.

### Metal Fabricators:

KC Fabrications, Gardiner, New Jersey

Service Metal Fabricating, Rockaway, New Jersey

### Site/Location:

9-11 Memorial Park and Museum. New York, New York.

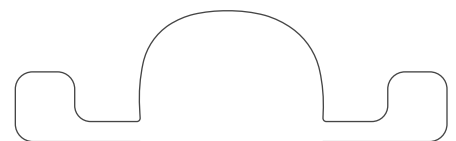
## Extrusions Used



K31615



K31616



K31618

